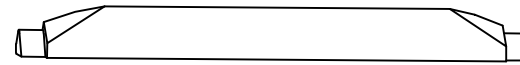


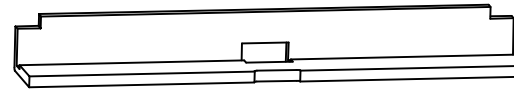
RETAINING BAND



T1 TOOTH
PART NO. T345405

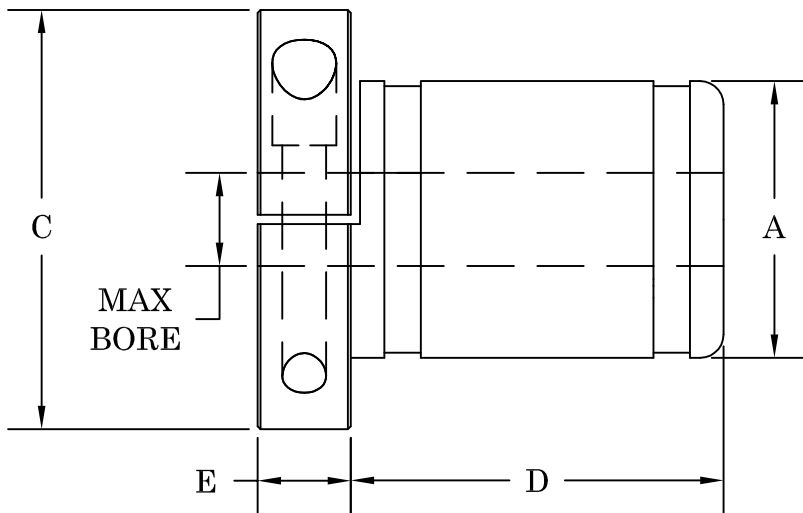


W2 CAVITY SPRING
PART NO. T325160



W1 CAVITY INSERT
PART NO. T190100

CORE SIZE AND TYPE: 3" through 6" core I.D. for most fiber, steel tipped, and plastic cores.
MOUNTING METHOD: Through shaft, flange clamped.
BORE TOLERANCE: +.010"



CHUCK NUMBER	A	MAX BORE SIZE	C	D	E	NUMBER OF TEETH	RETAIN. BANDS NUMBER
R0-3	2.97	2.00	4.50	4.00	1.00	3	B-3
R0-4	3.97	3.00	6.00	4.00	1.00	5	B-4
R0-5	4.97	3.00	6.00	4.00	1.00	5	B-5
R0-6	5.97	3.00	7.00	4.00	1.00	5	B-6

TILT-LOCK
THE ROLL HANDLING PEOPLE FOR OVER 30 YEARS.

12070 43rd St NE
St Michael, MN 55376
Phone: 763-497-7045
Fax: 763-497-7046
1-800-999-8458
<http://www.tiltlock.com>