

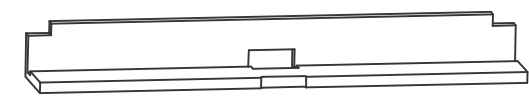
RETAINING BAND



T1 TOOTH
PART NO. T345405

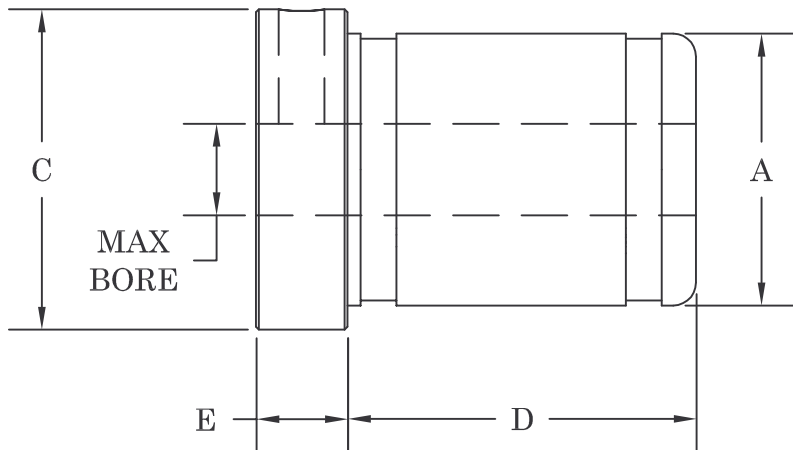


W2 CAVITY SPRING
PART NO. T325160



W1 CAVITY INSERT
PART NO. T190100

CORE SIZE AND TYPE: 1" through 4" core I.D. for most fiber, steel tipped, and plastic cores.
 MOUNTING METHOD: Through shaft with set screw and/or keyway if required.
 BORE TOLERANCE: +.010"



CHUCK NUMBER	A	MAX. BORE SIZE	C	D	E	NUMBER OF TEETH	RETAIN. BANDS NUMBER
R1-1	0.95	0.50	1.25	2.00	0.50	3	B-1
R1-112	1.075	0.50	1.38	2.00	0.50	3	B-112
R1-125	1.20	0.63	1.50	2.00	0.50	3	B-125
R1-150	1.45	0.75	1.75	2.00	0.50	3	B-150
R1-2	1.97	1.00	2.50	3.81	1.00	3	B-2
R1-3	2.97	2.25	3.50	3.81	1.00	3	B-3
R1-312	3.095	2.25	3.62	3.81	1.00	3	B-312
R1-325	3.20	2.25	3.75	3.81	1.00	3	B-325
R1-350	3.47	2.50	4.00	3.81	1.00	3	B-350
R1-4	3.97	3.00	4.50	3.81	1.00	5	B-4

TILT-LOCK
 THE ROLL HANDLING PEOPLE FOR OVER 30 YEARS.

12070 43rd St NE
 St Michael, MN 55376
 Phone: 763-497-7045
 Fax: 763-497-7046
 1-800-999-8458
<http://www.tiltlock.com>