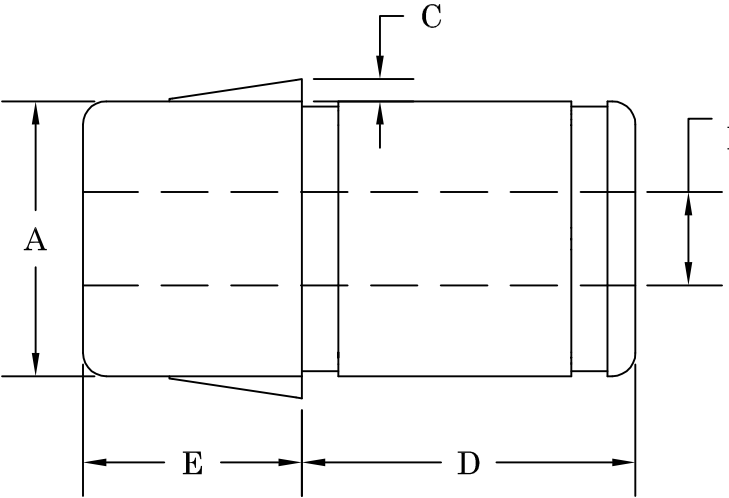


CORE SIZE AND TYPE: 2" through 6" core I.D. for most fiber, steel tipped, and plastic cores.  
 MOUNTING METHOD: Through shaft with set screw and/or keyway if required.  
 BORE TOLERANCE: +.010"



| CHUCK NUMBER | A     | MAX BORE SIZE | C    | D    | E    | NUMBER OF TEETH | RETAIN. BANDS NUMBER |
|--------------|-------|---------------|------|------|------|-----------------|----------------------|
| R5-2         | 1.95  | 1.00          | 0.25 | 3.59 | 2.34 | 3               | B-2                  |
| R5-3         | 2.95  | 2.25          | 0.25 | 3.59 | 2.34 | 3               | B-3                  |
| R5-312       | 3.075 | 2.25          | 0.25 | 3.59 | 2.34 | 3               | B-312                |
| R5-325       | 3.20  | 2.25          | 0.25 | 3.59 | 2.34 | 3               | B-325                |
| R5-350       | 3.45  | 2.50          | 0.25 | 3.59 | 2.34 | 3               | B-350                |
| R5-4         | 3.95  | 3.00          | 0.25 | 3.59 | 2.34 | 3               | B-4                  |
| R5-5         | 4.95  | 3.00          | 0.25 | 4.00 | 2.34 | 5               | B-5                  |
| R5-6         | 5.95  | 3.00          | 0.25 | 4.00 | 2.34 | 5               | B-6                  |

**TILT-LOCK**  
 THE ROLL HANDLING PEOPLE FOR OVER 30 YEARS.

12070 43rd St NE  
 St Michael, MN 55376  
 Phone: 763-497-7045  
 Fax: 763-497-7046  
 1-800-999-8458  
<http://www.tiltlock.com>