

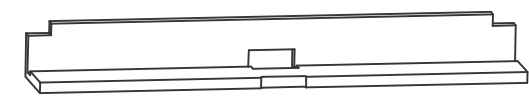
RETAINING BAND



T1 TOOTH  
PART NO. T345405

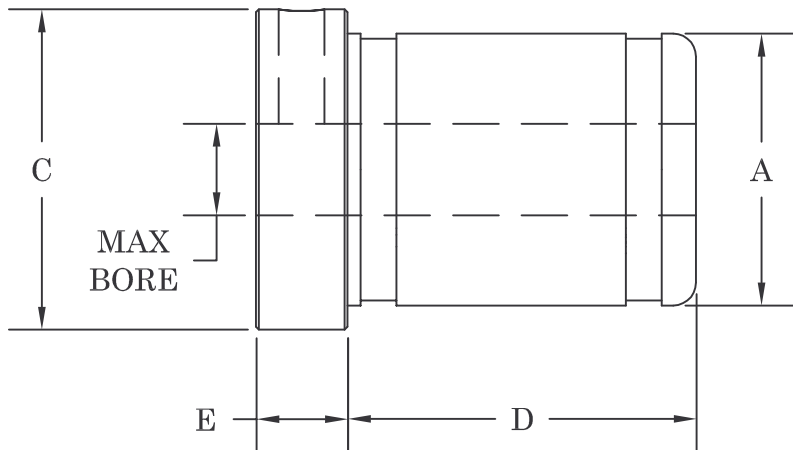


W2 CAVITY SPRING  
PART NO. T325160



W1 CAVITY INSERT  
PART NO. T190100

CORE SIZE AND TYPE: 3" through 4" core I.D. for most fiber, steel tipped, and plastic cores.  
MOUNTING METHOD: Through shaft with set screw and/or keyway if required.  
BORE TOLERANCE: +.010"



CHUCK NUMBER	A	MAX. BORE SIZE	C	D	E	NUMBER OF TEETH	RETAIN. BANDS NUMBER
X1-3	2.97	1.50	3.50	3.81	1.00	3	B-3
X1-312	3.095	1.50	3.62	3.81	1.00	3	B-312
X1-325	3.22	1.50	3.75	3.81	1.00	3	B-325
X1-350	3.47	1.50	4.00	3.81	1.00	3	B-350
X1-4	3.97	1.50	4.50	3.81	1.00	5	B-4

**TILT-LOCK**  
THE ROLL HANDLING PEOPLE FOR OVER 30 YEARS.

12070 43rd St NE  
St Michael, MN 55376  
Phone: 763-497-7045  
Fax: 763-497-7046  
1-800-999-8458  
<http://www.tiltlock.com>