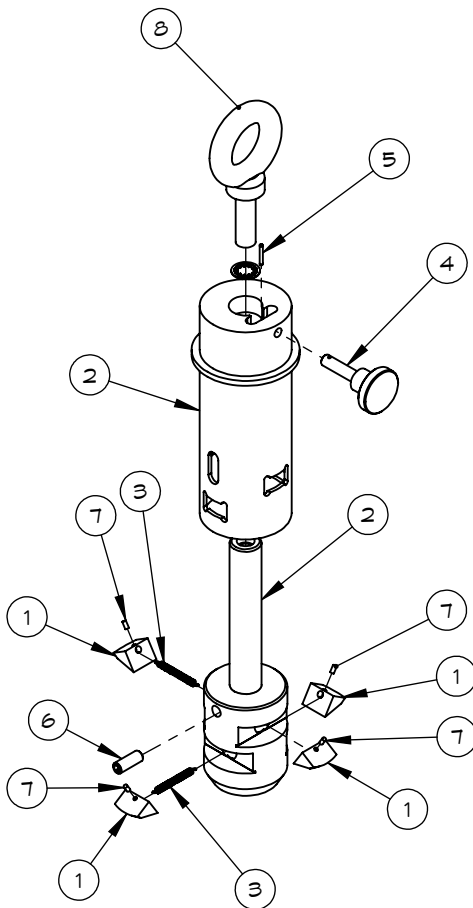


# MANUAL CENTER LIFT

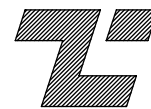
## Repair Parts List

ITEM#	QTY	PART#	DESCRIPTION
1	4	T345025	TOOTH, LP-12 COMPLETE
2	1	T220020	LIFT,CENTER 3" A3M-1T (STD)
3	2	T325120	SPRING,RETAINING 3" LP-13-3 B10292-1
4	1	T200140	KNOB,ST KNURLED ASSY SKA-12
5	1	T500000	PIN, SPRING 3/32" DIA. X 3/4" LG.
6	1	T500003	PIN, SPRING 3/8" DIA. X 1" LG.LP-6/ARP-6
7	1.5	T500001	PIN, SPRING RETAINING LP-15
8	1	T135040	EYEBOLT, SH 1/2"-13 NC AM-1



### INSTRUCTIONS FOR PARTS REPLACEMENT

1. Remove tooth center lift  
A) Locate tooth in center of dog bone shaped window
  2. Pull tooth away from outer shell and cut spring with wire snips  
A) Cut spring as close to tooth as possible so that spring can be re-used
  3. remove tooth that is located 180° from tooth was just removed.
  4. repeat above steps for each row of teeth
  5. Now you will need a small hammer and needle nose pliers
  6. Insert spring (T325120) eyelet into large hole on tooth (T345025) now press retainer pin into smaller hole on tooth (T345025) and through spring eyelet so that the spring is attached to tooth. Place tooth and spring back into center lift.  
A) Make sure sharp edge of tooth is closer to center lift flange
  7. Take needle nos pliers and pull spring through probe and repeat step 6.
- Hint A small piece of steel 20 GA (.036) x .50 x 3.00 may be used to hold spring in place when putting second tooth on spring
8. Repeat steps 6 and 7 for each row of teeth
  9. before using your center lift make sure the teeth are working freely by sliding inner shaft (T220020) up and down in the out shell
  10. Use 1/8" drill bit to remove LP-15 Pin (T500001)



TILT-LOCK INC.  
12070 43RD STREET NE  
ST. MICHAEL, MN 55376  
FAX: 763-497-7046  
PH: 763-497-7045

TOLERANCES UNLESS SPECIFIED			
MACHINED .XXX	-	±.005"	
.XX	-	±.01"	
.X	-	±.05"	
FRACTIONS	-	±1/16"	
ANGULAR	-	±.3°	

REV	DATE	BY	CHANGES

NOTICE TO PERSONS RECEIVING THIS DRAWING AND/OR TECHNICAL INFORMATION: TILT-LOCK CLAIMS PROPRIETARY RIGHTS TO THE MATERIAL DISCLOSED THEREON. THIS DRAWING AND/OR TECHNICAL INFORMATION IS ISSUED IN CONFIDENCE FOR ENGINEERING INFORMATION ONLY AND MAY NOT BE REPRODUCED OR USED TO MANUFACTURE ANYTHING SHOWN OR REFERRED TO HEREON WITHOUT DIRECT WRITTEN PERMISSION FROM TILT-LOCK TO THE USER.

TITLE  
EXPLODED VIEW OF A3M-1T  
CENTERLIFT

DRAWN BY: BCS	DATE: 8/8/14	SCALE: 1:6	WEIGHT: XXX LBS.
RELEASED BY: GLM	DRAWING: Manual Center Lift Repair Parts	SIZE: B	REV