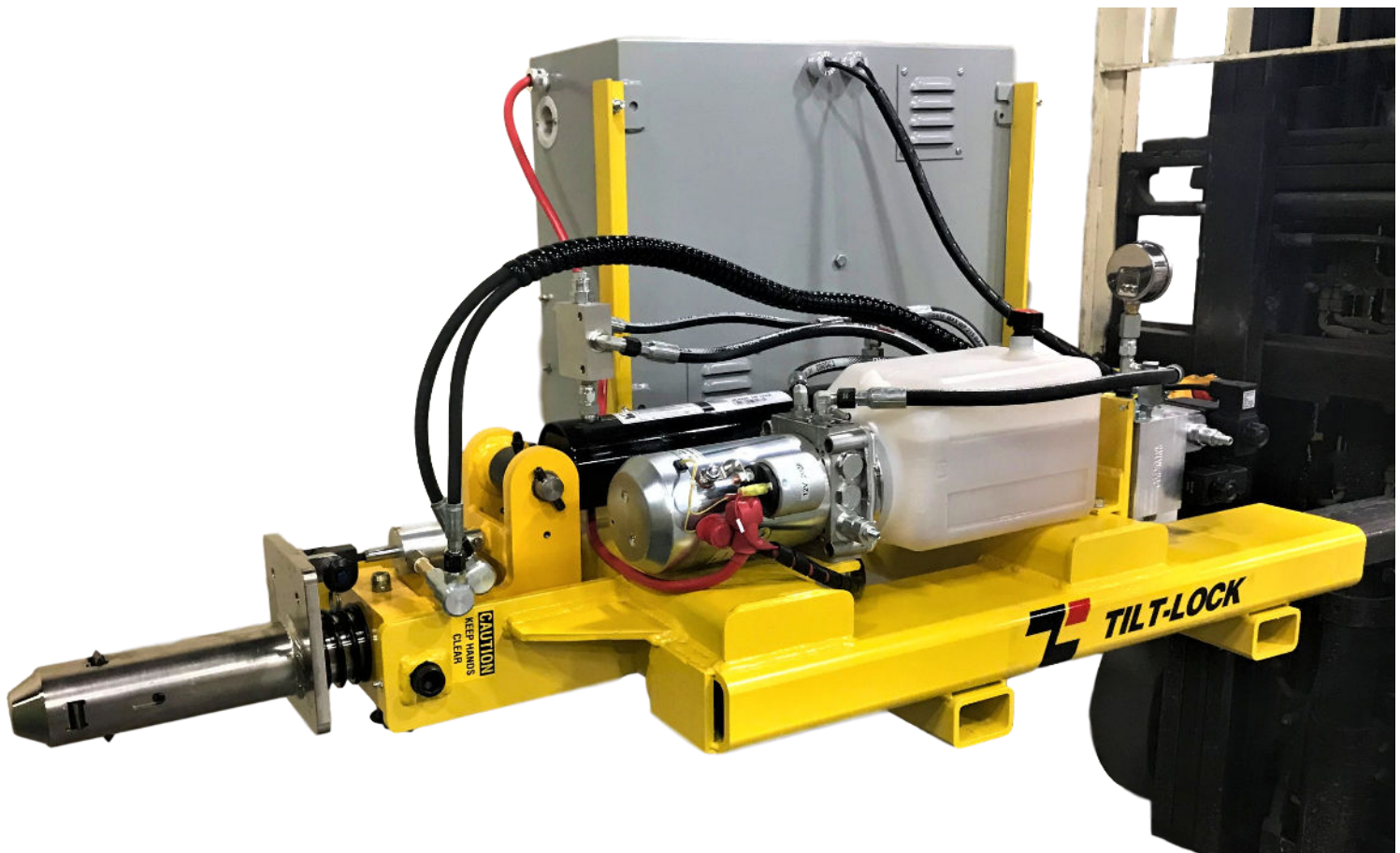




HF1 Hydraulic Forklift Attachment

This unit slides over forklift forks to quickly and safely lift, rotate and maneuver a roll.



POWER REQUIREMENTS

Unit integrated with on board battery. Unit plugs into standard 120V wall outlet to charge.

SPEED

Approximately 10 seconds per tip.

TIPPING RESTRICTIONS

No limit to cycles per hour.

WEIGHT

Attachment weighs 528lbs

CAPACITY

See Chart on page 2.

CONTROLS

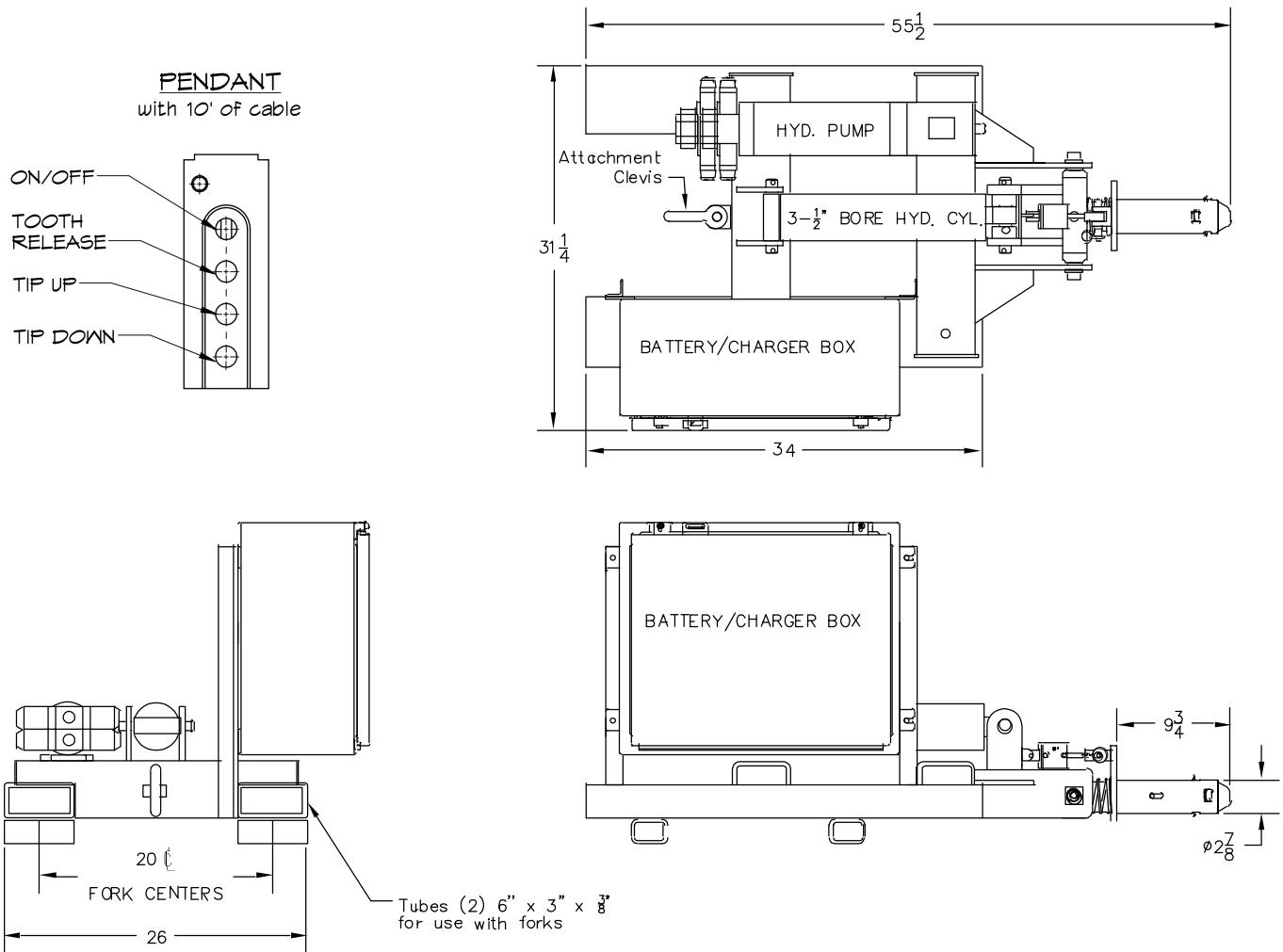
Tip up/ Tip down, and tooth release controls located on a pendant for operator to control while seated on forklift.

PROBE

All Tip Lifts probes are interchangeable. Probes Feature a patented design that prevents a roll from being release unless the weight of the roll is supported. This prevent unintentionally releasing the roll when the operator is not ready.

Hydraulic Forklift Attachment

DIMENSIONS



SPECS AND OPTIONS

Hydraulic Forklift Attachment Capacity					
Roll Face Width	32"	36"	40"	50"	60"
Max Capacity	2000lbs	1818lbs	1660lbs	1364lbs	1157lbs

*Capacity varies based on mobile cart capacity.

