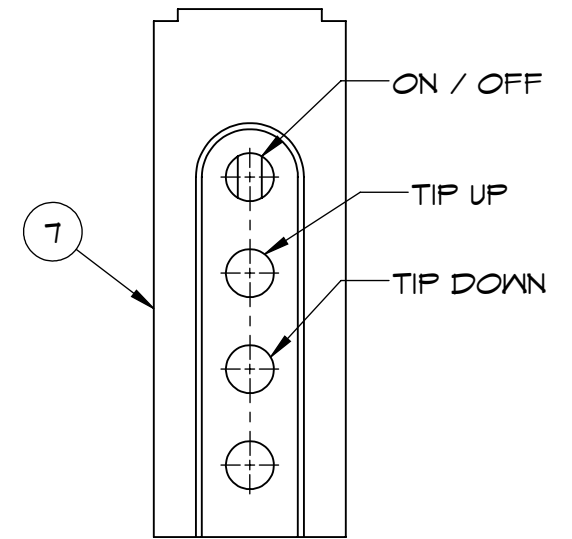
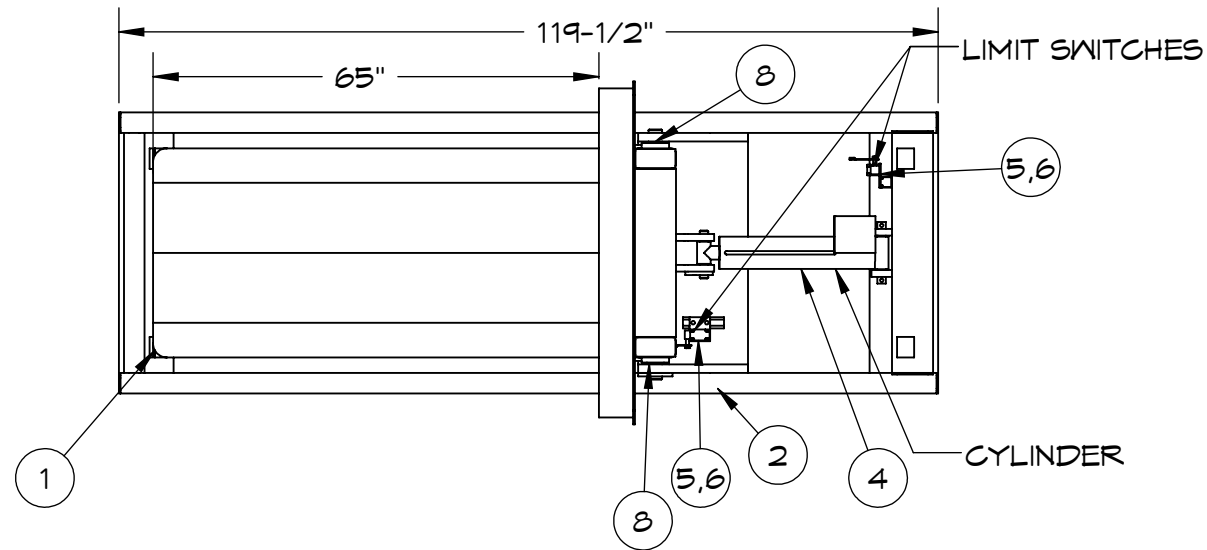
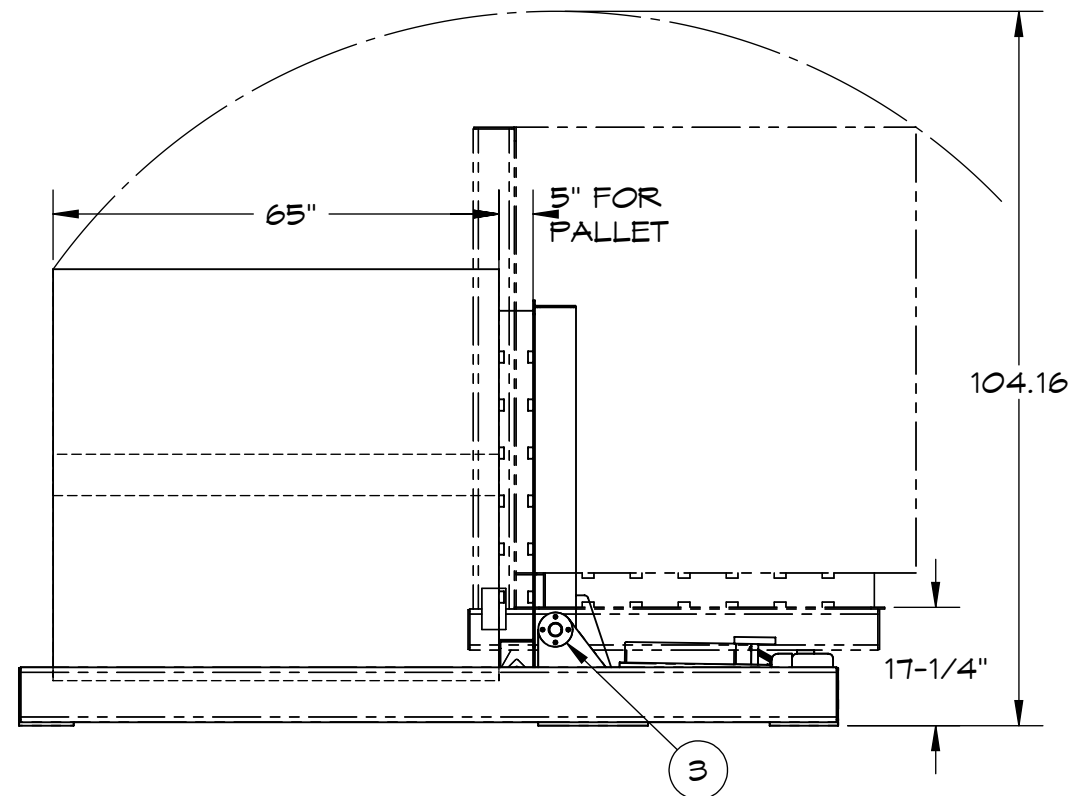
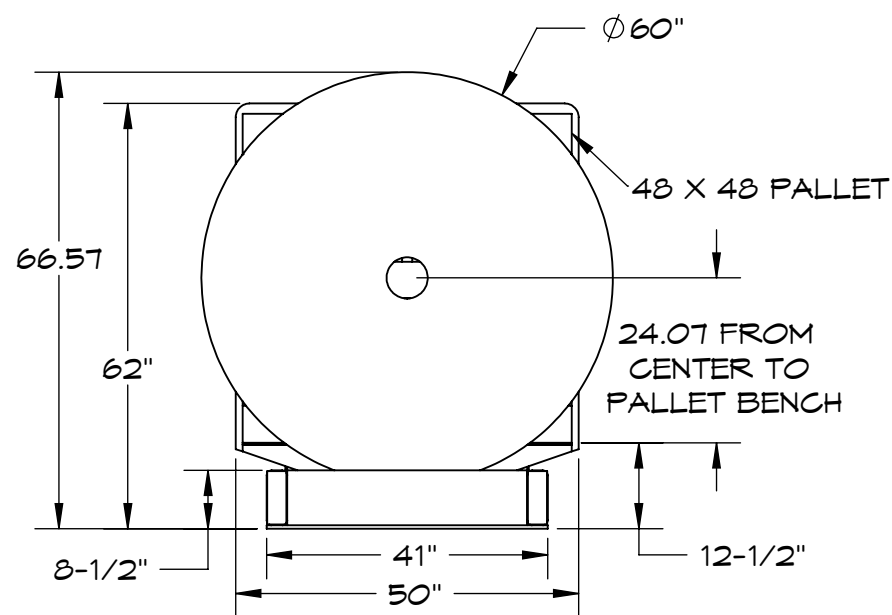


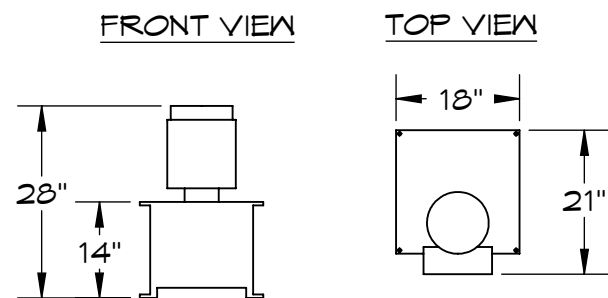
ISOMETRIC VIEW  
SCALE 2:3



4 BUTTON PENDANT  
10 FT. OF CABLE



ITEM#	QTY.	PART#	DESCRIPTION
1	1	T409934	ROLL OVER TABLE WELDMENT 5,000LB
2	1	T409935	ROLL OVER BASE WELDMENT 5,000LBS.
3	1	T250023-012	PIN, CRADLE PIVOT 2" DIA. 36.5" OAL
4	1	T181120-011	HYDRAULIC POWER UNIT - 3 H.P. SEE TEXT
5	2	T355530-001	SWITCH, LIMIT SQ D #XCKJ10541 (ROLLOVER)
6	4	T500272	NUT, W/SPRING FOR 1-5/8" CHANNEL 1/2-13
7	1	T245163	PENDANT, 4B #5BP-4-L2-BL-A2 HYD POWER
8	2	T035105	BRG, OILITE BRONZE FF-2203-4 SEE TEXT



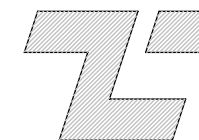
3 HP HYDRAULIC UNIT  
10 FT. OF 3/8" HYDRAULIC HOSE

TOLERANCES UNLESS SPECIFIED

MACHINED, .XXX	- ±.005"
.XX	- ±.01"
.X	- ±.05"
FRACTIONS	- ±1/16"
ANGULAR	- ±3°

REV	DATE	BY	CHANGES

NOTICE TO PERSONS RECEIVING THIS DRAWING AND/OR TECHNICAL INFORMATION: TILT-LOCK CLAIMS PROPRIETARY RIGHTS TO THE MATERIAL DISCLOSED THEREON. THIS DRAWING AND/OR TECHNICAL INFORMATION IS ISSUED IN CONFIDENCE FOR ENGINEERING INFORMATION ONLY AND MAY NOT BE REPRODUCED OR USED TO MANUFACTURE ANYTHING SHOWN OR REFERRED TO HEREON WITHOUT DIRECT WRITTEN PERMISSION FROM TILT-LOCK TO THE USER.



TILT-LOCK INC.  
12070 43RD STREET NE  
ST. MICHAEL, MN 55376  
FAX: 763-497-7046  
PH: 763-497-7045

TITLE  
**ROLLOVER ASSEMBLY 2,500 POUNDS**

DRAWN BY: <b>BCS</b>	DATE: <b>4/10/12</b>	SCALE: <b>NONE</b>	WEIGHT: <b>XXX LBS.</b>
RELEASED BY: <b>GLM</b>	DRAWING: <b>TA65058</b>	SIZE: <b>B</b>	REV: <b> </b>